



**Roger and Sue Abrahams**



Development Services  
16 MAR 2016  
Westgate, Bridgnorth

**Sara Jones**  
Case Officer  
Shropshire Planning  
ShireHall  
Shrewsbury

March 13<sup>th</sup> 2016

**Objection to the proposed building of the 53 bedroom accommodation block in the Severn Valley car park adjacent to The Hawthorns Estate**

The proposal is to build a 53 bedroom hostel with dining facilities; the building features an exterior ramp / bridge to the 2<sup>nd</sup> floor entrance door to the bedrooms. The building also has a 50ft high chimney / water tower.

The choice of building the accommodation unit on the North West side of the field will have the following detrimental effect on No's 9, 11, 15 and 17 The Hawthorns

**Privacy**

Attached photo "Number 1" shows the current view and "attached photo 2" shows how the view will change with the completion of the build. The volunteers entering the accommodation unit around the clock will be looking directly into our garden and bedroom windows. This is unavoidable because they will be using the ramp to gain access to their bedrooms. This ramp will be in use 24/7 and also at the most unsociable hours. It is a serious effect on our privacy to have people crossing a ramp **above** our fence level just a few metres away from our property.

**Disturbance**

Currently the 50 staff, mostly volunteers who work on the railway sleep in railway coaches around the current site. The plans are to put them all in one accommodation unit. For the volunteers this is a very much a social activity, they enjoy the railway and make new friends some stay for a week or two others just for a weekend. At the end of the day most enjoy the facilities of the Railwayman's Arms and most will leave together to go back to the accommodation unit. This will not be a silent return home to bed!!

To site this unit right up against a housing estate with young families and older people is totally unacceptable. The proposed plan is made even worse when the entrance ramp to the 53 bedrooms is not only on view as a feature of the design but it is so close to our property, as you can see from photo 2.

Furthermore the dining room for the volunteers directly overlooks us, consequently there will be considerable noise coming from this room from their early morning start.

If we have to use this field to locate the 53 bedroom hostel then there are at least two other options that i believe are more suitable to the SVR and The Hawthorns residents

**Options1**

This is our preferred option and that is to build the 53 bedroom hostel on the South West side but rotate it 90 degrees and provide a path to the accommodation block behind the unit to the first floor entrance ramp thus cutting down the disturbance to a minimum and not affecting our privacy. See plan marked A

**Option 2**

Keep the unit in the same direction, but build it on the South West side this will improve our privacy and reduce the disturbance to what we can only estimate will be an acceptable level.

What ever option is settled upon (SVR proposal or ours) the ground has to be dug out and levelled. At most we are talking about an extra cost of an excavator for one day as there is more soil to shift with option 1 or 2. However the soil can be used to build a grassy back on the North West side helping to reduce traffic noise

Going ahead with the plans as they are will give rise to constant daily complaints from The Hawthorns residents to the SVR about the noise level from the catering unit in the morning and the arrival back to hostel of the 53 residents after closing time, let alone other infringements on privacy,

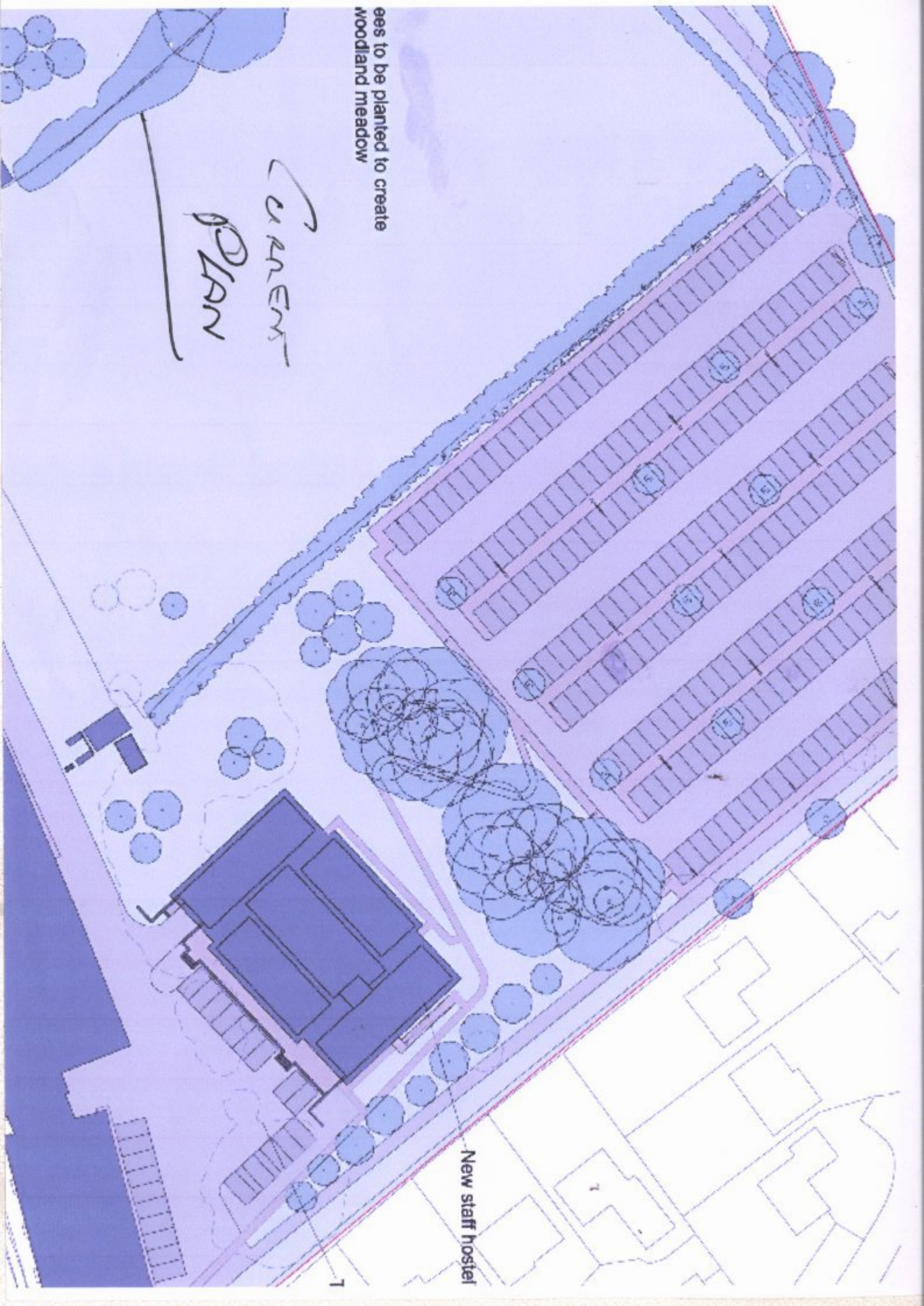
I would like to arrange a meeting with our local councillors and a representative from Shropshire Planning along with representatives of the Hawthorns residents who are most affected by these proposals. It would be beneficial if it would be on site. Please forward me some proposed dates.

Regards  
Roger Abrahams



rees to be planted to create  
woodland meadow

*CURRENT  
PLAN*

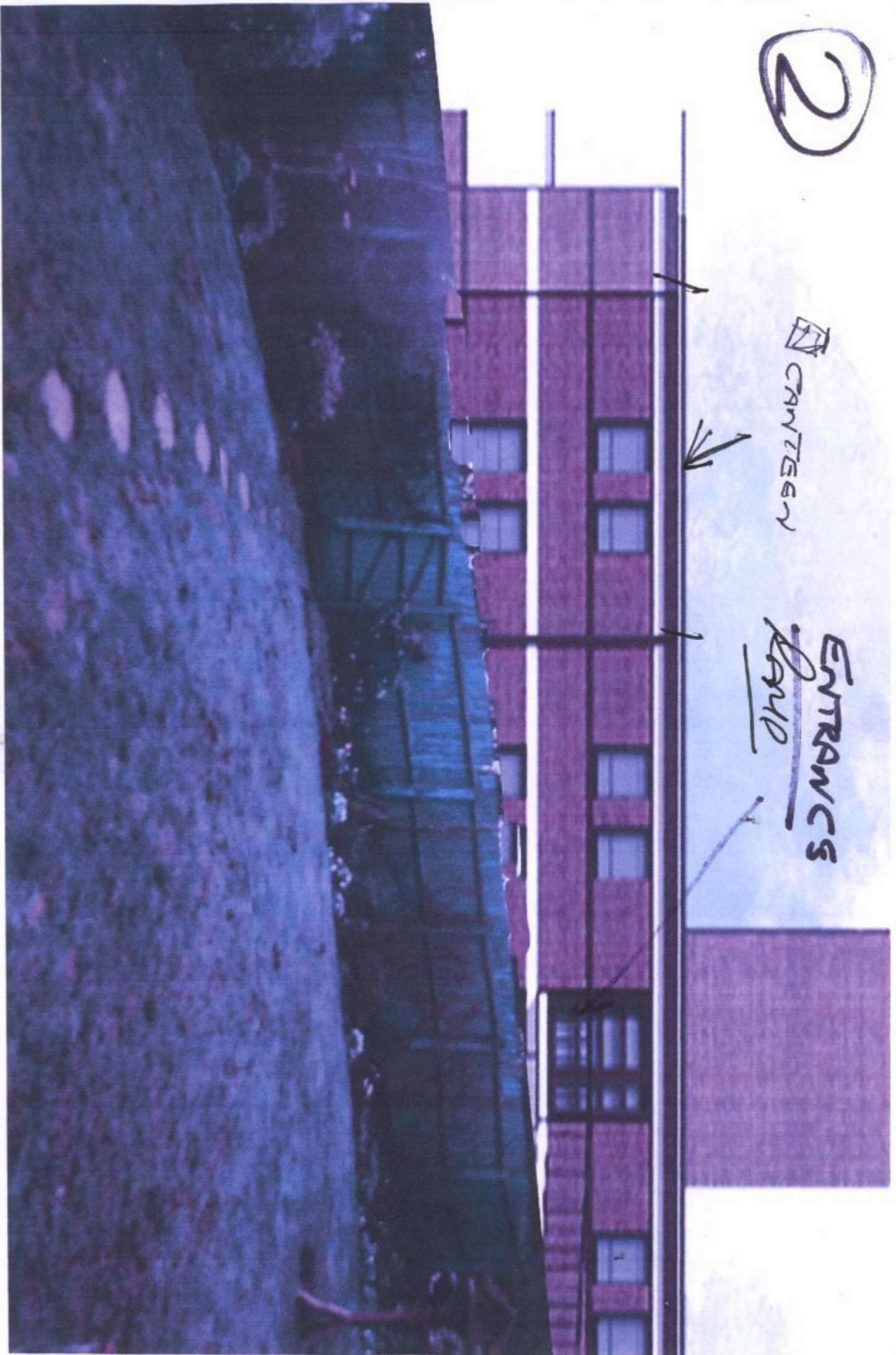


2

CANTILEN



ENTRANCES  
LAND





Trees to be planted to create  
a woodland meadow

OPTION

①

STAIR ROUTE  
WALKWAY TO  
PARK

ARROWS  
NEXT CAR PARKING  
OR LOW LEVEL  
STORAGE

New

